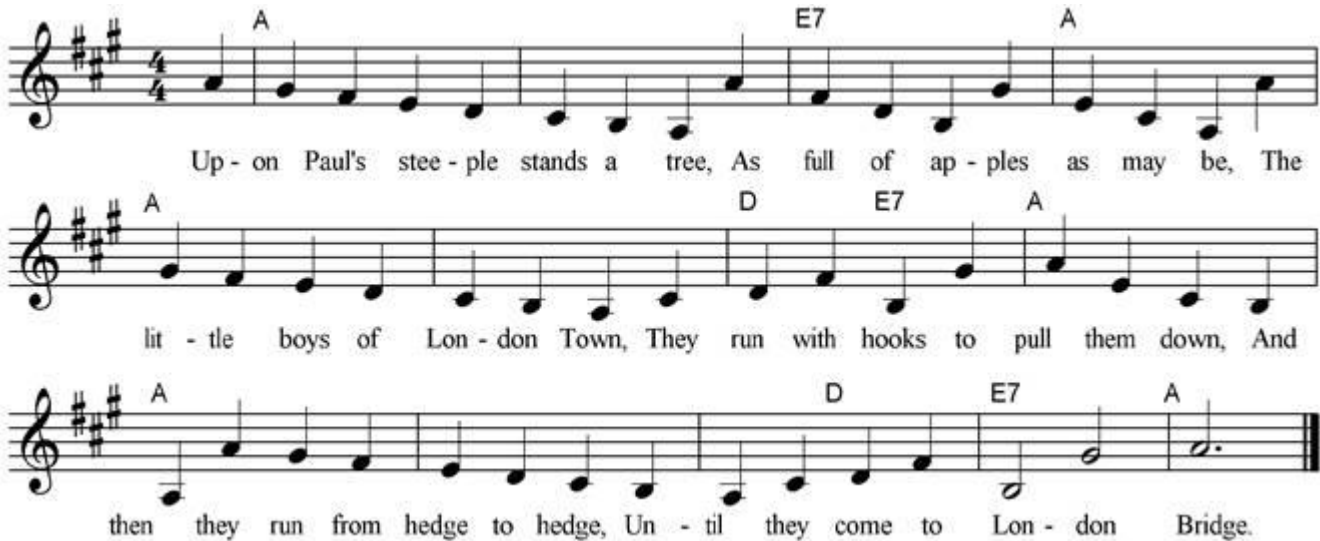


Saint Paul's steeple

<https://riverofsong.uk/>

This nursery rhyme is not as well-known as many probably because it is difficult for young children to sing, it replicates the peel of church bells. It is a song from the Middle Ages and refers to the original St Paul's when the city was much more rural in nature with hedges and lanes predominating.



Upon Paul's steeple stands a tree,
As full of apples as may be,
The little boys of London town,
They run with hooks to pull them down,
And then they go from hedge to hedge,
Until they come to London Bridge.