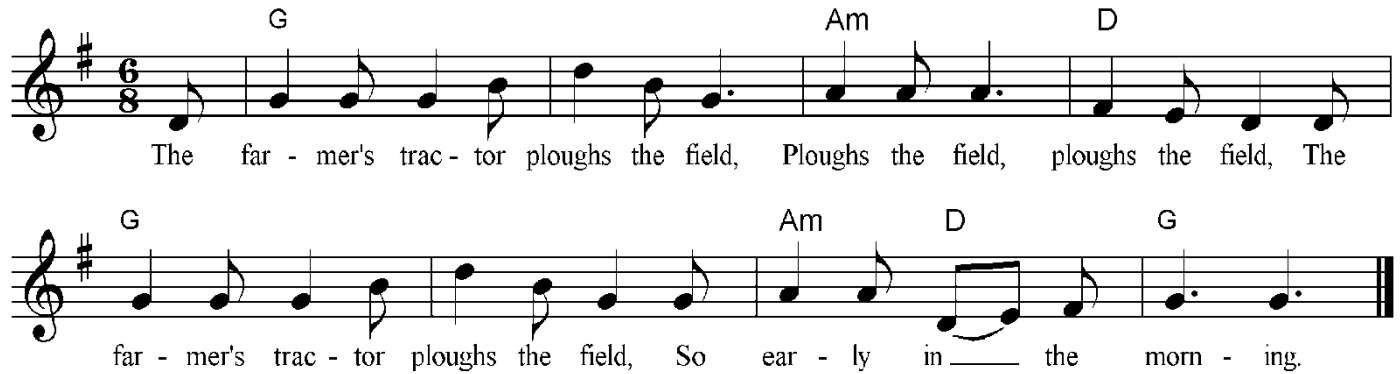


# The farmer's tractor

<https://riverofsong.uk/>



*A song for harvest time. How does bread end up on our table? It starts in the field. Dramatize the cycle of ploughing, sowing seeds to the baking and eating of bread. This is a version of 'Farmer John' from 'Music for the Nursery school' by Linda Chesterman published in 1935. Words adapted by Dany Rosevear. Encourage children to express the words freely with suitable actions.*



The farmer's tractor ploughs the field,  
Ploughs the field, ploughs the field,  
The farmer's tractor ploughs the field,  
So early in the morning.



Now its time to sow the seed,  
Sow the seed, sow the seed  
Now its time to sow the seed,  
So early in the morning.



Gentle showers come falling down,  
Come falling down, come falling down,  
Gentle showers come falling down,  
So early in the morning.



Now the corn begins to grow, etc...

A combine comes to cut it down, etc...

Now the miller grinds the corn, etc...

Take the flour and mix it well, etc...

Place it in an oven hot, etc...

Now the baker sells the bread, etc...

Take the bread and eat it up, etc...

