

Every night when the sun goes in

<https://riverofsong.uk/>

*A campfire, vespers, community spiritual adapted from the Appalachian tradition. Can be sung as an echo
Two groups sing one follows the other.*

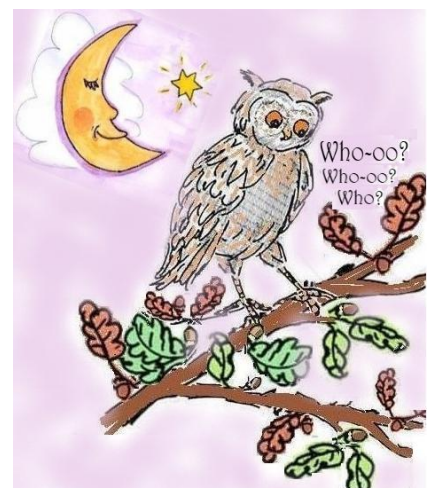


Ev - 'ry night _____ when the sun goes in, _____ Ev - 'ry
night _____ when the sun goes in, _____ Ev - 'ry night _____ when the sun goes _____
in, _____ I hang my head _____ and mourn - ful cry. _____

Ev'ry night when the sun goes in,
Ev'ry night when the sun goes in,
Ev'ry night when the sun goes in,
I hang my head and mournful cry.



If the stars, in the sky don't shine,
If the stars, in the sky don't shine,
If the stars, in the sky don't shine,
I hang my head, and mournful cry.



If the moon hides behind a cloud,
If the moon hides behind a cloud,
If the moon hides behind a cloud,
I hang my head, and mournful cry.