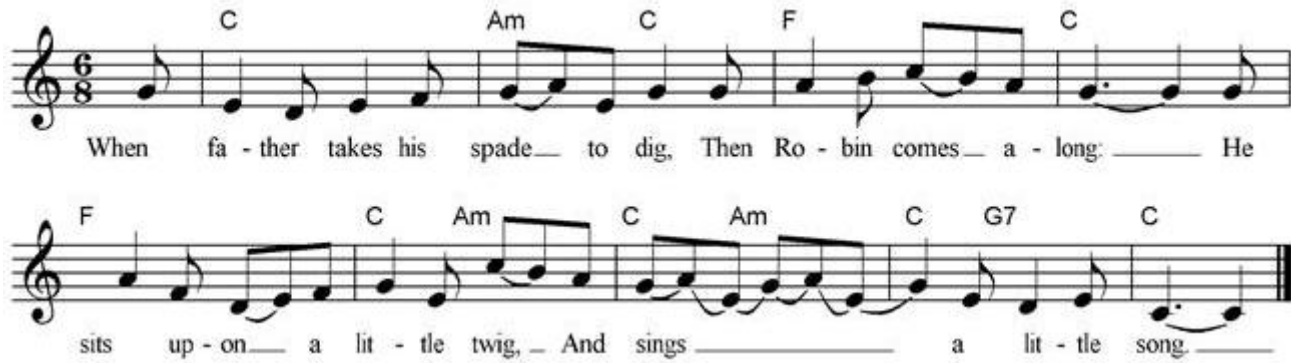


The robin

<https://riverofsong.uk/>

A poem by Lawrence Alma-Tadema - 1864-1940 from 'Songs of Womanhood' published 1903. It was set to music by Herbert Wiseman for 'A third 60 songs for little children' OUP 1960.



When father takes his spade to dig,
Then Robin comes along;
He sits upon a little twig,
And sings a little song.

Or, if the trees are rather far,
He does not stay alone,
But comes up close to where we are,
And bobs upon a stone.